

F. SCHOPP.

Breech-Loading Fire-Arm.

No. 51,225.

Patented Nov. 28, 1865.

Fig. 1.

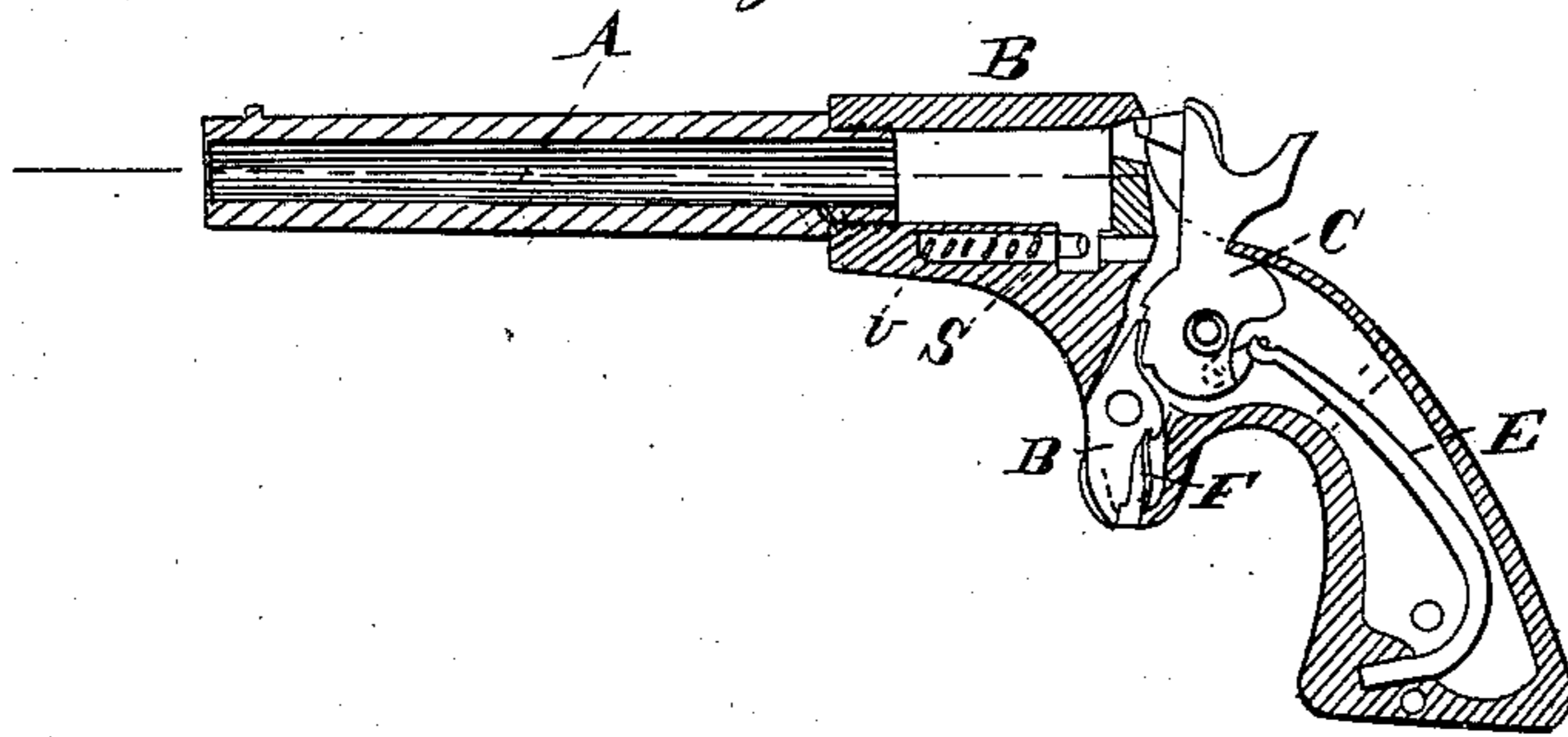


Fig. 3.

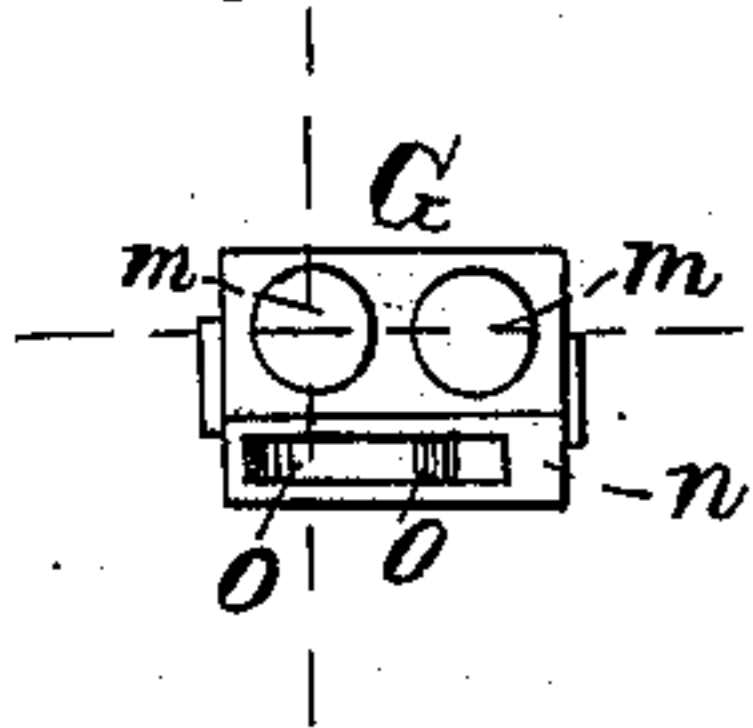


Fig. 2.

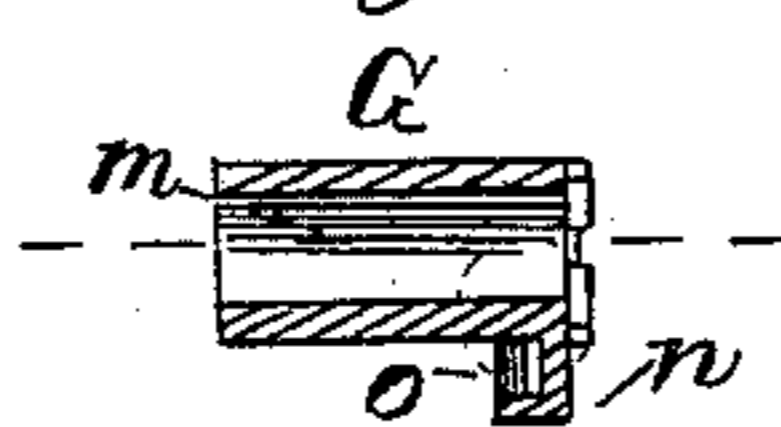


Fig. 4.

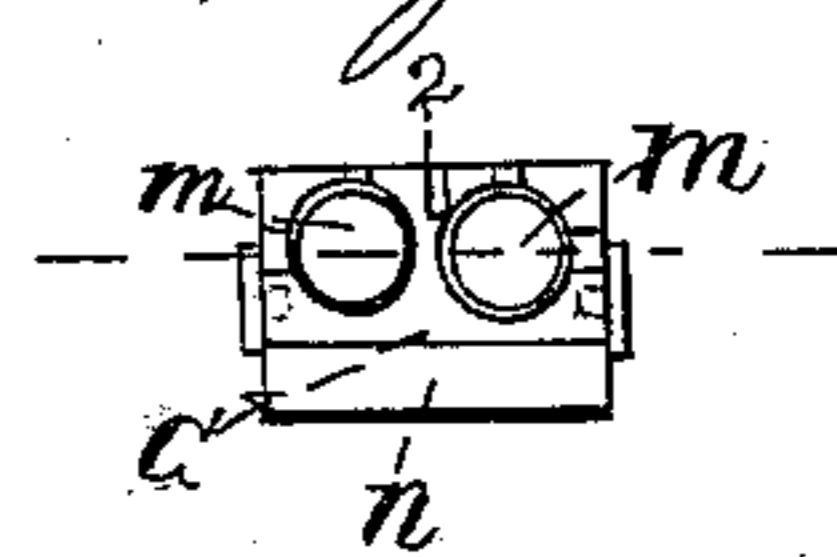
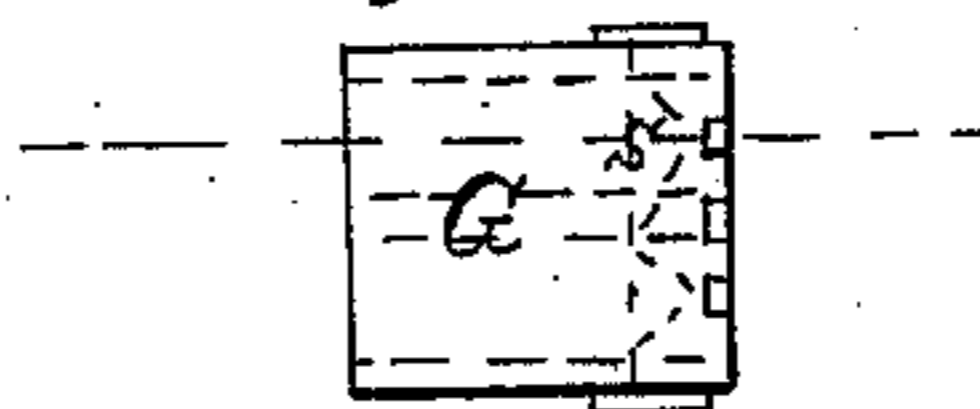


Fig. 5.



Inventor:

Francis Schopp

Witnesses.

Mary E. Rader

Paul M. W. W.

UNITED STATES PATENT OFFICE.

FRANCIS SCHOPP, OF NEW YORK, N. Y.

IMPROVEMENT IN BREECH-LOADING FIRE-ARMS.

Specification forming part of Letters Patent No. 51,225, dated November 28, 1865.

To all whom it may concern:

Be it known that I, FRANCIS SCHOPP, of New York, in the county and State of New York, have invented a new and useful Improvement in Pistols; and I do hereby declare that the following is a full and exact description of the same, reference being had to the accompanying drawings, and to the letters of reference marked thereon.

Figure I represents a longitudinal section of my improved pistol. Fig. II is a section of the movable breech. Fig. III is a front view of the same; Fig. IV, an end view, and Fig. V of top view, of the breech.

The nature of my invention consists in the arrangement of a movable breech, sliding horizontally and containing two charges capable of being fired off successively.

In the accompanying drawings, A represents the barrel, firmly secured to the stock or breech-frame B. C is the cock, D the trigger, E the lock-spring, and F the trigger-spring, constructed in the usual manner.

The opening through the stock or breech-frame B is made square, into which a square breech, G, is fitted perfectly tight, capable of moving sidewise or horizontally, and provided with two openings, *m m'*, to receive the cartridges. On the lower side, near the after end of this breech-piece, a projection, *n*, is made, extending the whole width of said breech-piece G, and provided with recesses *o o'*, made with slanting sides, into which said recesses a pin, *s*, arranged in a suitable hole in the lower part of the breech-frame, B, is made to work. This pin *s* is acted upon by a spiral spring, *v*, situated behind said pin *s*, so as to force said pin into the recesses *o* or *o'*, and to keep thereby the breech-piece G fast in either one or the other position.

The cock C being placed in the position represented in the drawings, or at half-cock, the breech-piece G can be moved sideways sufficient to introduce a cartridge into one of the openings, *m*, at the side of the breech-frame

when the breech-piece G is moved in the other direction, so as to charge the other opening, *m'*, on the other side of the breech-frame. The breech-piece G is then moved so that the recess 2 between the two openings *m m'* (see Fig. IV) comes opposite the end of the cock C, when said cock C may be brought to rest, falling into this recess 2, and holding thereby the breech-piece G in that position, when the now loaded pistol can be carried with perfect safety in the pocket.

The bottoms of the recesses *o* and *o'* correspond with the center lines of the cartridge-chambers *m m'*, but the inclined side of the recess *o* toward *o'* is carried farther over than the center of the breech-piece G, by which arrangement the pin *s* will stand upon this inclined surface, when the breech-piece G is in the center held fast by the cock C, as above described.

When the pistol is to be fired off the motion of the cock C to half-cock will liberate the breech-piece G, when the pin *s* will act against the inclined side of the recess *o* so as to move said breech-piece G in a manner that the cartridge-chamber *m* will come in a line with the barrel A, ready to be fired off, after which the breech-piece can be moved by the finger so that the pin *s* comes into the recess *o'*, whereby the cartridge-chamber *m'* will be brought in a line with the barrel A, ready to be fired off, when the breech must be reloaded.

I do not claim, generally, a double-chambered square sliding breech-piece; but

What I claim as my invention, and desire to secure by Letters Patent, is—

The pin *s*, acted upon by a spring and operating the breech-piece G, in the manner and for the purpose substantially as set forth and specified.

FRANCIS SCHOPP.

Witnesses:

HENRY E. ROEDER,
DAVID MOSHER.